

3-Port Flanged Iron Rotary Shoe Valves

Features



- Mixing or diverting applications
- Good control characteristics

Specification

Flow type	Mixing / diverting
Fluid temperature:	
Min.	-15°C
Max.	+110°C
Rangeability	100:1
Max. pressure drop:	50kPa
Max. static pressure	600kPa
Leakage	See table (page 2)
Materials:	
Body & cover	Cast iron
Spindle	Brass
Slipper	Brass
O-rings	EPDM
Flange	PN6
Required motor torque:	
65 to 100mm	10Nm
155 to 150mm	15Nm
Country of origin	Sweden

Product Codes

VR-F-P3-F50-K60	50mm 3-Port rotary shoe valve, Kvs 60.0
VR-F-P3-F65-K90	65mm 3-Port rotary shoe valve, Kvs 90.0
VR-F-P3-F80-K150	80mm 3-Port rotary shoe valve, Kvs 150
VR-F-P3-F100-K225	100mm 3-Port rotary shoe valve, Kvs 225
VR-F-P3-F125-K280	125mm 3-Port rotary shoe valve, Kvs 280
VR-F-P3-F150-K400	150mm 3-Port rotary shoe valve, Kvs 400

Linkage kits:

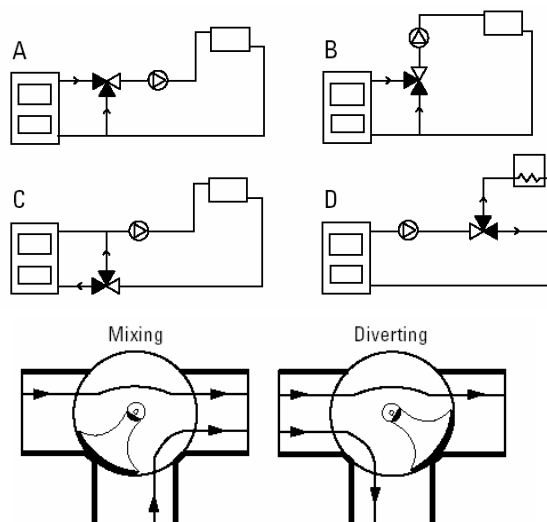
VR-LK2	For VA actuators up to 16Nm
VR-LK3	For VA failsafe actuators

Technical Overview

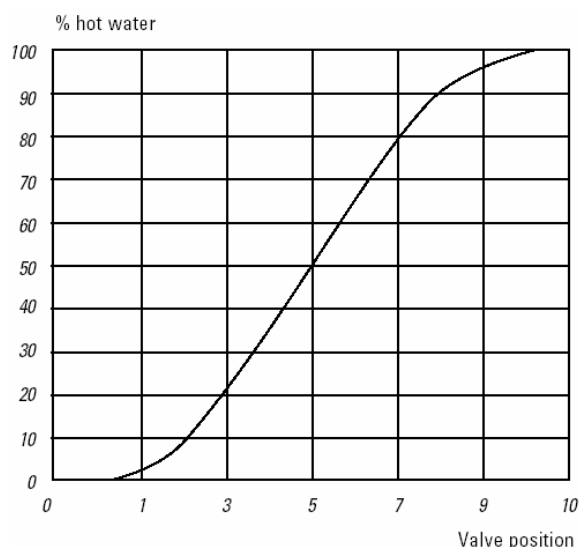
The VR-F series are cast iron rotary shoe valves for use in heating systems in mixing and diverting applications. Valves are designed to provide good control characteristics and reliability of operation.

Valves are flanged from 50 to 150mm and PN6.

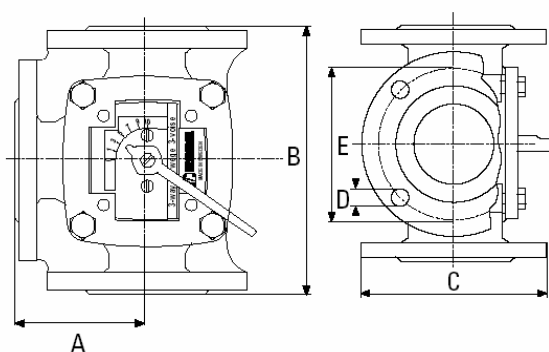
Installation Examples



Valve Characteristics



Dimensions



Part code	Size (mm)	Kvs (m3/H)	Dimensions (mm)					% Let by		Actuator Force	Linkage Type
			A	B	C	D	E	Mix	Div.		
VR-F-P3-F50-K60	50	66	97.5	195.0	140.0	4 x 15	110	1.0	0.5	8Nm	VR-LK2
VR-F-P3-F65-K90	65	90	100.0	200.0	160.0	4 x 15	130	1.0	0.5	8Nm	VR-LK2
VR-F-P3-F80-K150	80	150	120.0	240.0	190.0	4 x 18	150	1.0	0.5	8Nm	VR-LK2
VR-F-P3-F100-K225	100	225	132.5	265.0	210.0	4 x 18	170	1.0	0.5	8Nm	VR-LK2
VR-F-P3-F125-K280	125	280	150.0	300.0	240.0	4 x 18	200	1.0	0.5	16Nm	VR-LK2
VR-F-P3-F150-K400	150	400	175.0	350.0	265.0	4 x 18	225	1.0	0.5	16Nm	VR-LK2

Flow Chart

